

## CISCO CATALYST EXPRESS 500 SERIES SWITCHES

Cisco® Catalyst® Express 500 Series switches deliver Cisco class networking tailored for businesses with up to 250 employees. Powered by Cisco Systems® technology, this family of Layer 2-managed Fast Ethernet and Gigabit Ethernet switches offers nonblocking, wire-speed performance that provides a secure network foundation optimized for data, wireless, and voice. Built-in advanced security features help ensure that your devices and network are protected.

The intuitive GUI simplifies setting up, running, and troubleshooting a network. Embedded Cisco Smartports with preset Cisco recommended network configurations, quality of service (QoS), security, and multicast settings allow for transparent integration of data, video, IP Communications, and wireless LAN applications. With Cisco Smartports technology, mission-critical traffic is prioritized; voice conversations are clear; bandwidth-intensive video traffic does not impact other applications on the network—and your wireless network is secure. Integrated intelligence within the switch helps you detect device and network problems before they impact your business.

You can manage each switch with the embedded GUI device manager, or manage your network with Cisco Network Assistant, an advanced PC-based network management application. Cisco Network Assistant offers centralized management and configuration of Cisco switches and other Cisco devices such as routers and wireless access points. With Cisco Network Assistant, in addition to configuring multiple switches at a time, you can configure Cisco wireless access points, and invoke the device manager on Cisco routers and access points. Software upgrades on Cisco switches, routers, and wireless access points are as easy as a drag-and-drop process. You can download Cisco Network Assistant (available at no cost) from the Cisco website <http://www.cisco.com/go/cna>.

The Cisco Catalyst Express 500 Series switches also offer Power over Ethernet (PoE), reducing the cost and complexity of IP Communications and wireless LAN deployments. PoE is an advanced technology that allows a switch to supply power and provide Ethernet connectivity at the same time over Category 5 cable to inline power devices, such as wireless access points, closed-circuit TV cameras, and IP phones. The PoE ports eliminate the cost and complexity of running additional power outlets or cables to inline power devices.

The Cisco Catalyst Express 500 Series has four models (Figure 1 and Table 1).

**Figure 1.** Cisco Catalyst Express 500 Series

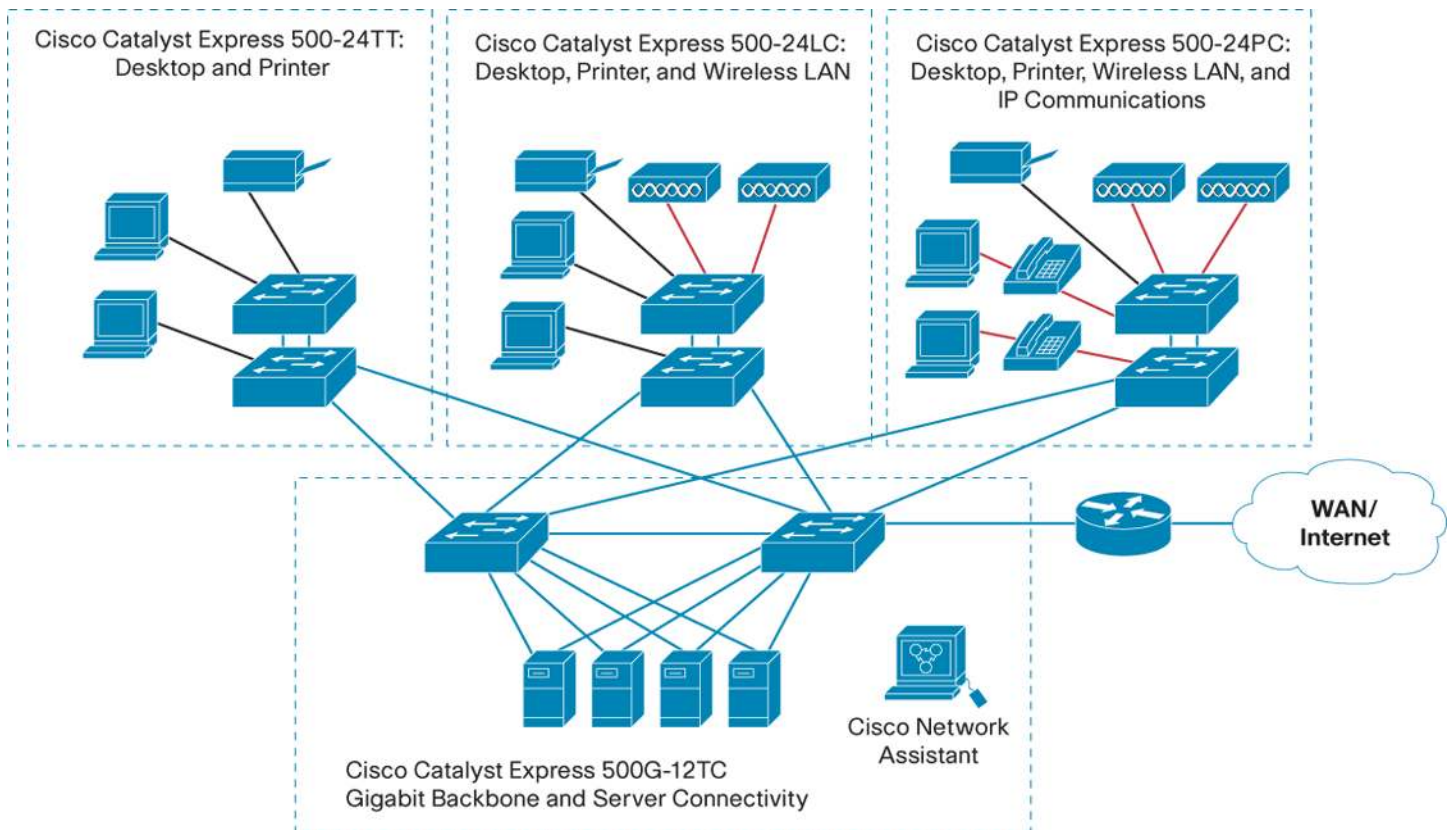


**Table 1.** Cisco Catalyst Express 500 Series Models

Product Name / (SKUs)	Description
<b>Cisco Catalyst Express 500-24TT (WS-CE500-24TT)</b>	<ul style="list-style-type: none"> <li>• Twenty-four 10/100 ports for desktop connectivity</li> <li>• Two 10/100/1000BASE-T ports for uplink or server connectivity</li> </ul>
<b>Cisco Catalyst Express 500-24LC (WS-CE500-24LC)</b>	<ul style="list-style-type: none"> <li>• Twenty 10/100 ports for desktop connectivity</li> <li>• Four 10/100 PoE ports for desktop, wireless access point, IP telephony, or closed-circuit TV camera connectivity</li> <li>• Two 10/100/1000BASE-T or Small Form-Factor Pluggable (SFP) ports for uplink or server connectivity</li> </ul>
<b>Cisco Catalyst Express 500-24PC (WS-CE500-24PC)</b>	<ul style="list-style-type: none"> <li>• Twenty-four 10/100 PoE ports for desktop, wireless, IP telephony, or closed-circuit TV camera connectivity</li> <li>• Two 10/100/1000BASE-T or SFP ports for uplink or server connectivity</li> </ul>
<b>Cisco Catalyst Express 500G-12TC (WS-CE500G-12TC)</b>	<ul style="list-style-type: none"> <li>• Eight 10/100/1000BASE-T and four 10/100/1000BASE-T or SFP ports for switch aggregation or server connectivity</li> </ul>

Figure 2 shows a typical deployment scenario with Cisco Catalyst Express 500 Series switches.

**Figure 2.** Typical Cisco Catalyst Express 500 Series Switch Deployment Scenario



## KEY BENEFITS

### Performance

With nonblocking, wire-speed switching on all ports, the Cisco Catalyst Express 500 Series offers 10-/100-Mbps ports for desktop, wireless access point, printer, and IP phone connectivity, and 10/100/1000BASE-T or SFP ports for server or backbone connectivity. With head-of-line blocking prevention, a heavily congested port will not affect performance on other ports on the switch.

### Easy to Use

The Cisco Catalyst Express 500 Series switches are designed for ease of use. The switch is initialized through the GUI device manager—no console cable or terminal emulation application is needed. Integrated intelligence optimizes the switch at the system level. Optimal configuration for each port can be applied by choosing from 10 preset Cisco Smartports roles. And, all PoE ports can supply up to the IEEE standard maximum of 15.4W simultaneously. There is no need to do creative power budgeting or worry about exceeding the power limit or adding an external power shelf. And all ports support autonegotiation of port speed and duplex. With automatic medium-dependent interface crossover (Auto-MDIX) detection support, you do not have to worry about incorrect cable types.

### Smart

Deploying and running an end-to-end Cisco network for up to 250 employees has never been easier. With Cisco Smartports Advisor, the Cisco Catalyst Express 500 Series switches automatically discover connected Cisco devices and suggest appropriate Smartport roles. With the Smartports phone and desktop role, voice quality is guaranteed. Telephone conversations are not affected by employees sending or downloading large files. The switches also can autodetect misconfigurations and suggest corrections.

### Secure

The Cisco Catalyst Express 500 Series switches offer you layers of security to protect your business. To secure the device, management traffic to and from the GUI device manager can be encrypted with Secure Sockets Layer (SSL) and Simple Network Management Protocol Version 3 (SNMPv3). For network security, you can choose from three business-optimized security levels. Tight integration with Cisco Aironet wireless access points allows you to quickly and easily deploy a secure wireless LAN network. With the Cisco Self-Defending Network and Cisco Clean Access solutions, the Cisco Catalyst Express 500 Series helps protect your network against worms and viruses, and raises the overall security protection of your network to the next level.

### Easy Monitoring and Troubleshooting

Troubleshooting is easy with the Cisco Troubleshooting Advisor, which identifies cabling problems such as wiring opens and shorts, common configuration errors, and other potential problems in your network, and recommends corrective action. Graphical trend charts and an Alert LED help you identify problems before they cause network outages.

### Limited Lifetime Hardware Warranty

The Cisco Catalyst Express 500 Series comes with Limited Lifetime Hardware Warranty. More details are available at <http://www.cisco.com/go/warranty>

### Service and Support

Available for a small fee, SMB Support Assistant is a service and support program that helps SMBs control costs, ensure operational efficiency and protect their network investment. For more details, visit [www.cisco.com/go/smbasa](http://www.cisco.com/go/smbasa).

## PRODUCT SPECIFICATIONS

Table 2 gives specifications of the Cisco Catalyst Express 500 Series switches.

**Table 2.** Specifications of Cisco Catalyst Express 500 Series Switches

Feature	Description
<b>Performance</b>	
<b>Switching Capacity</b>	<ul style="list-style-type: none"> <li>8.8 Gbps for Cisco Catalyst Express 500-24TT, Catalyst Express 500-24LC, and Catalyst Express 500-24PC</li> <li>24 Gbps for Cisco Catalyst Express 500G-12TC</li> </ul>
<b>Forwarding Rate</b>	<ul style="list-style-type: none"> <li>6.6-Mpps wire-speed performance for Cisco Catalyst Express 500-24TT, Catalyst Express 500-24LC, and Catalyst Express 500-24PC</li> <li>18-Mpps wire-speed performance for Cisco Catalyst Express 500G-12TC</li> </ul>
<b>Layer 2 Switching</b>	
<b>MAC Addresses</b>	8000 MAC addresses
<b>Number of VLANs</b>	32 VLANs (1000 range)
<b>Number and Type of Queues</b>	<ul style="list-style-type: none"> <li>4 queues per port</li> <li>Shaped Round Robin (SRR) queuing</li> </ul>
<b>Smartports (Preset Cisco Recommended Network Enhancements, QoS, and Security)</b>	
<b>Desktop</b>	The port is configured for optimal desktop performance.
<b>Phone and Desktop</b>	Voice traffic is prioritized to ensure clear voice conversation.
<b>Router</b>	The port is configured for optimal connection to a router or firewall for WAN connectivity.
<b>Switch</b>	The port is configured as an uplink port to a backbone switch for fast convergence.
<b>Access Point</b>	The port is configured for optimal connection to a wireless access point.
<b>Server</b>	Servers can be prioritized as trusted, critical, business, or standard.
<b>Printer</b>	The port is optimized so that printer traffic does not affect mission-critical and voice traffic.
<b>Guest</b>	Guests are allowed access to the Internet, but not to the company network.
<b>Diagnostic</b>	Customers can connect diagnostics devices to monitor traffic on other switches (configurable via Cisco Network Assistant only)
<b>Other</b>	Customers can configure the VLAN.
<b>Security</b>	
<b>Security Policy Slider</b>	<p>Three security levels: low, medium, and high (configurable via Cisco Network Assistant only)</p> <ul style="list-style-type: none"> <li><b>Low</b>—For business environments where there is limited guest access; limited number of devices are allowed per port</li> <li><b>Medium</b>—For business environments where security is important; only authorized devices (by MAC address) are allowed on the company network</li> <li><b>High</b>—For business environments where security is critical; only authorized devices (by MAC address) and authenticated users (via IEEE 802.1x) are allowed on the company network</li> </ul>
<b>Multicast</b>	High-bandwidth video traffic is optimized so that it does not impact other applications on the network.
<b>Inline Power (PoE)</b>	<p>All 24 PoE ports on the Cisco Catalyst Express 500-24PC can supply up to 15.4W (IEEE 802.3af standard maximum) of power over Category 5 cable, for a total of 370W of inline power.</p> <p>All 4 PoE ports on Cisco Catalyst Express 500-24LC switches can supply up to 15.4W of power over Category 5 cable, for a total of 62W of inline power.</p> <p>Both the IEEE 802.3af PoE standard and Cisco Prestandard Inline Power are supported.</p>

Feature	Description
<b>Product Specifications</b>	
<b>Standards and Cisco Features Supported</b>	<ul style="list-style-type: none"> <li>• Cisco Discovery Protocol version 2 (CDPv2)</li> <li>• IEEE 802.1d Spanning Tree Protocol</li> <li>• IEEE 802.1p Class of service (CoS) classification</li> <li>• IEEE 802.1q VLAN</li> <li>• IEEE 802.1w Rapid Convergence Spanning Tree Protocol</li> <li>• IEEE 802.1x Port Access Authentication</li> <li>• IEEE 802.3ad Link Aggregation Control Protocol (LACP)</li> <li>• IEEE 802.3af Power over Ethernet</li> <li>• IEEE 802.3x full duplex on 10BASE-T, 100BASE-TX, and 1000BASE-T ports</li> <li>• IEEE 802.3 10BASE-T</li> <li>• IEEE 802.3u 100BASE-T/TX</li> <li>• IEEE 802.3ab 1000BASE-T</li> <li>• IEEE 802.3z 1000BASE-X</li> <li>• IGMP (v1, v2, and v3) snooping</li> <li>• Per VLAN Spanning Tree</li> <li>• Per VLAN Spanning Tree Plus</li> <li>• Per VLAN Rapid Spanning Tree Plus</li> <li>• Secure Sockets Layer (SSL)</li> <li>• SNMPv3 (read-only)</li> </ul>
<b>Management (for Monitoring Only)</b>	<ul style="list-style-type: none"> <li>• BRIDGE-MIB</li> <li>• ENTITY-MIB</li> <li>• ETHERNET-MIB</li> <li>• IF-MIB</li> <li>• RFC1213-MIB (MIB II)</li> <li>• RMON-MIB (statistics, history, alarms, and events groups only)</li> <li>• CISCO-PRODUCTS-MIB</li> <li>• CISCO-SYSLOG-MIB</li> <li>• CISCO-ENVMON-MIB</li> </ul>
<b>Connectors and Cabling</b>	<ul style="list-style-type: none"> <li>• 10/100BASE-TX ports: RJ-45 connectors; 2-pair Category 5 unshielded twisted pair (UTP) cabling</li> <li>• 10/100/1000BASE-T ports: RJ-45 connectors; 4-pair Category 5 UTP cabling</li> <li>• 1000BASE-SX, 1000BASE-LX/LH, 100BASE-FX, 100BASE-LX, and 100BASE-BX-based ports: LC fiber connectors (single-mode or multimode fiber)</li> </ul>
<b>Physical Specifications</b>	<p><b>Dimensions</b> (H x W x D):</p> <ul style="list-style-type: none"> <li>• 1.73 x 17.5 x 9.9 in. (4.39 x 44.45 x 25.15 cm) for Cisco Catalyst Express 500-24TT, Catalyst Express 500-24LC, and Catalyst Express 500G-12TC</li> <li>• 1.73 x 17.5 x 14.4 in. (4.39 x 44.45 x 36.58 cm ) for Cisco Catalyst Express 500-24PC</li> </ul> <p><b>Weight:</b></p> <ul style="list-style-type: none"> <li>• 8 lb (3.7 kg) for Cisco Catalyst Express 500-24TT, Catalyst Express 500-24LC, and Catalyst Express 500G-12TC</li> <li>• 12 lb (5.5 kg) for Cisco Catalyst Express 500-24PC</li> </ul>

Feature	Description															
<b>Power Requirements</b>	<table border="1"> <thead> <tr> <th>Switch Model</th> <th>Power Consumption (maximum)</th> <th>Power Dissipation</th> </tr> </thead> <tbody> <tr> <td>Cisco Catalyst Express 500-24TT</td> <td>30W or 102 BTUs per hour</td> <td>30W</td> </tr> <tr> <td>Cisco Catalyst Express 500-24LC</td> <td>110W or 375 BTUs per hour</td> <td>45W</td> </tr> <tr> <td>Cisco Catalyst Express 500-24PC</td> <td>460W or 1570 BTUs per hour</td> <td>90W</td> </tr> <tr> <td>Cisco Catalyst Express 500G-12TC</td> <td>45W or 154 BTUs per hour</td> <td>45W</td> </tr> </tbody> </table>	Switch Model	Power Consumption (maximum)	Power Dissipation	Cisco Catalyst Express 500-24TT	30W or 102 BTUs per hour	30W	Cisco Catalyst Express 500-24LC	110W or 375 BTUs per hour	45W	Cisco Catalyst Express 500-24PC	460W or 1570 BTUs per hour	90W	Cisco Catalyst Express 500G-12TC	45W or 154 BTUs per hour	45W
	Switch Model	Power Consumption (maximum)	Power Dissipation													
Cisco Catalyst Express 500-24TT	30W or 102 BTUs per hour	30W														
Cisco Catalyst Express 500-24LC	110W or 375 BTUs per hour	45W														
Cisco Catalyst Express 500-24PC	460W or 1570 BTUs per hour	90W														
Cisco Catalyst Express 500G-12TC	45W or 154 BTUs per hour	45W														
	<p><i>Input Voltage</i></p> <ul style="list-style-type: none"> <li>AC input voltage/frequency: 100-240Vac, 1.3-0.8A, 50-60Hz</li> <li>DC input voltages for Cisco Redundant Power System 675 (supported by Cisco Catalyst Express 500-24PC only): 12V at 14A, -48V at 7.8A</li> </ul>															
<b>Environmental Requirements</b>	<p><i>Operating temperature:</i> 32 to 113°F (0 to 45°C)</p> <p><i>Storage temperature:</i> -13 to 158°F (-25 to 70°C)</p> <p><i>Operating relative humidity:</i> 10 to 85% (noncondensing)</p> <p><i>Operating altitude:</i> Up to 10,000 ft (3000m)</p> <p><i>Storage altitude:</i> Up to 15,000 ft (4500m)</p>															
<b>Predicted Mean Time Between Failure (MTBF)</b>	<p>308,482 hours or 35 years for Cisco Catalyst Express 500-24TT</p> <p>282,705 hours or 32 years for Cisco Catalyst Express 500-24LC</p> <p>211,167 hours or 24 years for Cisco Catalyst Express 500-24PC</p> <p>289,193 hours or 33 years for Cisco Catalyst Express 500G-12TC</p>															
<b>Acoustic Noise</b>	<p>ISO 7770, bystander position: Operating to an ambient temperature of 30°C</p> <p>Cisco Catalyst Express 500-24TT, Catalyst Express 500-24LC, Catalyst Express 500G-12TC: 40dBa, Cisco Catalyst Express 500-24PC: 48dBa</p>															
<b>Regulatory Agency Approvals</b>																
<b>Safety Certifications</b>	<ul style="list-style-type: none"> <li>UL to UL 60950-1</li> <li>CUL to CAN/CSA C22.2 No. 60950-1</li> <li>TUV/GS to EN 60950-1</li> <li>CB to IEC 60950-1 with all country deviations</li> <li>NOM to NOM-019-SCFI</li> <li>CE Marking</li> </ul>															
<b>Electromagnetic Compatibility Certifications</b>	<ul style="list-style-type: none"> <li>FCC Part 15 Class A</li> <li>EN 55022 Class A (CISPR22)</li> <li>EN 55024 (CISPR24)</li> <li>VCCI Class A</li> <li>AS/NZS CISPR22 Class A</li> <li>MIC</li> <li>China EMC requirements</li> <li>GOST</li> </ul>															

## SERVICE AND SUPPORT

The services and support programs described in the following table are available directly from Cisco and through resellers.

Service and Support	Features	Benefits
---------------------	----------	----------

<p>Cisco SMB Support Assistant direct from Cisco</p> <p>Packaged Cisco SMB Support Assistant support-available through resellers</p>	<ul style="list-style-type: none"> <li>• 24x7 Service Request (case); SMB TAC engineers will respond within one business day during normal business hours</li> <li>• Next Business Day Advance Replacement of Hardware, where available, otherwise Same Day Ship.</li> <li>• Management tools designed for SMBs: Start-up and Configuration Assistance, Basic Health Checks and Troubleshooting, Inventory and Contract Management</li> </ul>	<ul style="list-style-type: none"> <li>• Lowers cost of ownership by using Cisco expertise and knowledge</li> <li>• Minimizes network downtime</li> </ul>
--	---	---



**Corporate Headquarters**

Cisco Systems, Inc.  
 170 West Tasman Drive  
 San Jose, CA 95134-1706  
 USA  
[www.cisco.com](http://www.cisco.com)  
 Tel: 408 526-4000  
 800 553-NETS (6387)  
 Fax: 408 526-4100

**European Headquarters**

Cisco Systems International BV  
 Haarlerbergpark  
 Haarlerbergweg 13-19  
 1101 CH Amsterdam  
 The Netherlands  
[www-europe.cisco.com](http://www-europe.cisco.com)  
 Tel: 31 0 20 357 1000  
 Fax: 31 0 20 357 1100

**Americas Headquarters**

Cisco Systems, Inc.  
 170 West Tasman Drive  
 San Jose, CA 95134-1706  
 USA  
[www.cisco.com](http://www.cisco.com)  
 Tel: 408 526-7660  
 Fax: 408 527-0883

**Asia Pacific Headquarters**

Cisco Systems, Inc.  
 168 Robinson Road  
 #28-01 Capital Tower  
 Singapore 068912  
[www.cisco.com](http://www.cisco.com)  
 Tel: +65 6317 7777  
 Fax: +65 6317 7799

Cisco Systems has more than 200 offices in the following countries and regions. Addresses, phone numbers, and fax numbers are listed on the **Cisco Website** at [www.cisco.com/go/offices](http://www.cisco.com/go/offices).

Argentina • Australia • Austria • Belgium • Brazil • Bulgaria • Canada • Chile • China PRC • Colombia • Costa Rica • Croatia • Cyprus  
 Czech Republic • Denmark • Dubai, UAE • Finland • France • Germany • Greece • Hong Kong SAR • Hungary • India • Indonesia • Ireland • Israel  
 Italy • Japan • Korea • Luxembourg • Malaysia • Mexico • The Netherlands • New Zealand • Norway • Peru • Philippines • Poland • Portugal  
 Puerto Rico • Romania • Russia • Saudi Arabia • Scotland • Singapore • Slovakia • Slovenia • South Africa • Spain • Sweden • Switzerland • Taiwan  
 Thailand • Turkey • Ukraine • United Kingdom • United States • Venezuela • Vietnam • Zimbabwe

Copyright © 2005 Cisco Systems, Inc. All rights reserved. CCSP, CCVP, the Cisco Square Bridge logo, Follow Me Browsing, and StackWise are trademarks of Cisco Systems, Inc.; Changing the Way We Work, Live, Play, and Learn, and iQuick Study are service marks of Cisco Systems, Inc.; and Access Registrar, Aironet, ASIST, BPX, Catalyst, CCDA, CCDP, CCIE, CCIP, CCNA, CCNP, Cisco, the Cisco Certified Internetwork Expert logo, Cisco IOS, Cisco Press, Cisco Systems, Cisco Systems Capital, the Cisco Systems logo, Cisco Unity, Empowering the Internet Generation, Enterprise/Solver, EtherChannel, EtherFast, EtherSwitch, Fast Step, FormShare, GigaDrive, GigaStack, HomeLink, Internet Quotient, IOS, IP/TV, iQ Expertise, the iQ logo, iQ Net Readiness Scorecard, LightStream, Linksys, MeetingPlace, MGX, the Networkers logo, Networking Academy, Network Registrar, Packet, PIX, Post-Routing, Pre-Routing, ProConnect, RateMUX, ScriptShare, SlideCast, SMARTnet, StrataView Plus, TeleRouter, The Fastest Way to Increase Your Internet Quotient, and TransPath are registered trademarks of Cisco Systems, Inc. and/or its affiliates in the United States and certain other countries.

All other trademarks mentioned in this document or Website are the property of their respective owners. The use of the word partner does not imply a partnership relationship between Cisco and any other company. (0502R) 205356.D\_ETMG\_CC\_7.05

